



# THE PRESERVE AT LAKE POWELL

FLOOR PLANS  
TARPON - 4-5BR



Elevation A



Elevation B

- 4 bedrooms
- 3.5 bathrooms
- 2 porches
- 2-car garage
- Optional 5th bedroom and full bath in lieu of study and half bath
- 2,428 sq ft (1,550 lower floor, 878 upper floor)



850-641-8802 - [Info@ThePreserveAtLakePowell.com](mailto:Info@ThePreserveAtLakePowell.com) - [www.ThePreserveAtLakePowell.com](http://www.ThePreserveAtLakePowell.com)

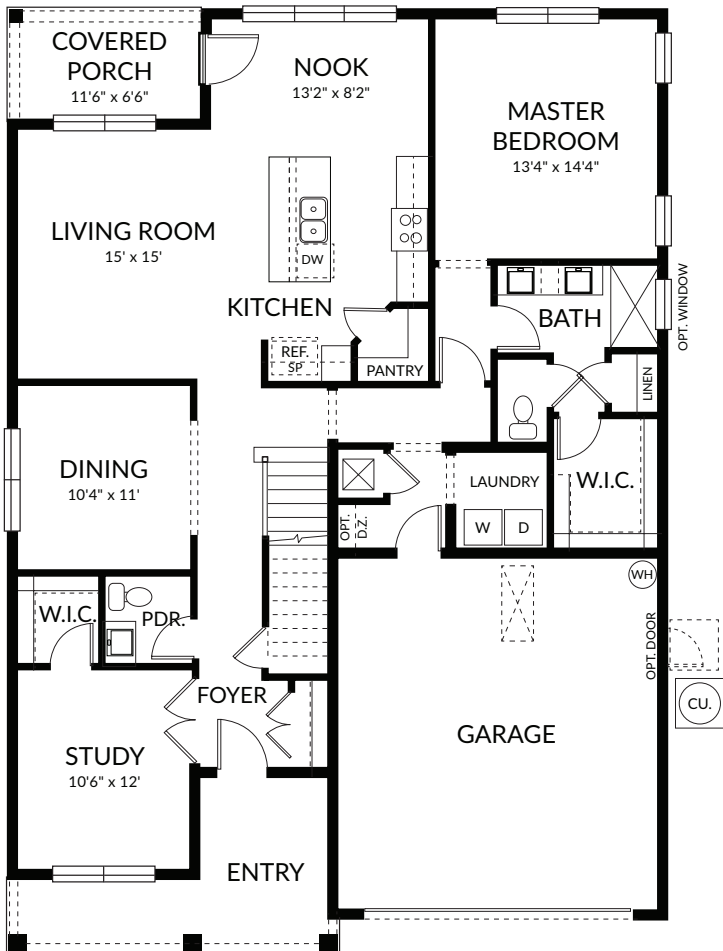
*Floor plan and rendering is an artist's conceptual rendering intended to provide a general overview. It does not constitute actual plans and specifications for any home and may depict elevations, upgrades, features and amenities that are not included as part of the home and/or may not be available for all lots. The floor plan rendering may not be drawn to scale. Any dimensions on the floor plan rendering are approximate and actual dimensions may vary. Plans and specifications are subject to change without notice. Homes may be constructed with floor plan that is the reverse of the floor plan rendering.*



# THE PRESERVE AT LAKE POWELL

## FLOOR PLANS TARPON - 4-5BR

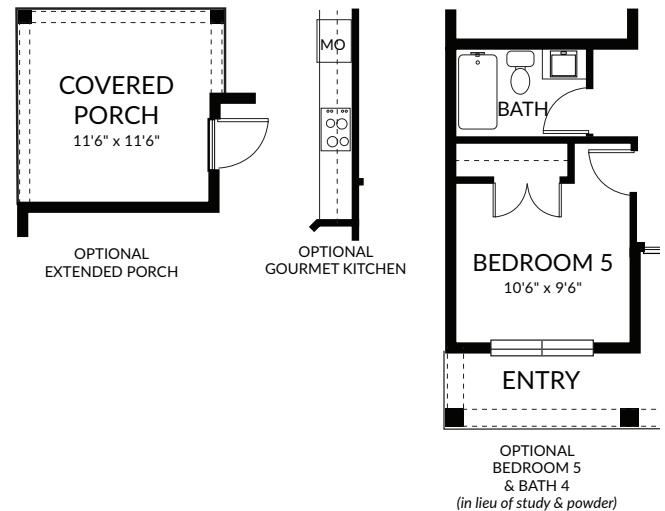
### 1st Level



### 2nd Level



### 1st Level Options



- 4 bedrooms
- 3.5 bathrooms
- 2 porches
- 2-car garage
- Optional 5th bedroom and full bath in lieu of study and half bath
- 2,428 sq ft (1,550 lower floor, 878 upper floor)



850-641-8802 - [Info@ThePreserveAtLakePowell.com](mailto:Info@ThePreserveAtLakePowell.com) - [www.ThePreserveAtLakePowell.com](http://www.ThePreserveAtLakePowell.com)

Floor plan and rendering is an artist's conceptual rendering intended to provide a general overview. It does not constitute actual plans and specifications for any home and may depict elevations, upgrades, features and amenities that are not included as part of the home and/or may not be available for all lots. The floor plan rendering may not be drawn to scale. Any dimensions on the floor plan rendering are approximate and actual dimensions may vary. Plans and specifications are subject to change without notice. Homes may be constructed with floor plan that is the reverse of the floor plan rendering.