



# THE PRESERVE AT LAKE POWELL

## FLOOR PLANS FLOUNDER



Elevation A



Elevation B

- 3 bedrooms
- 2 bathrooms
- 1 porch
- 2-car garage
- 1,653 sq ft



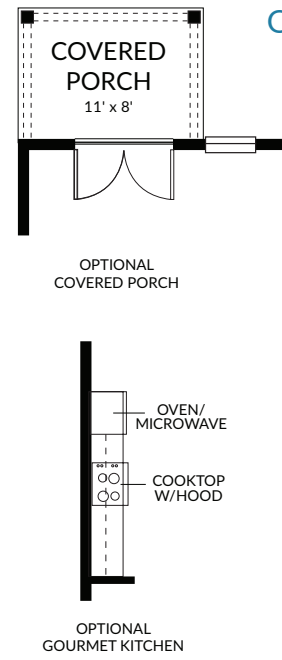
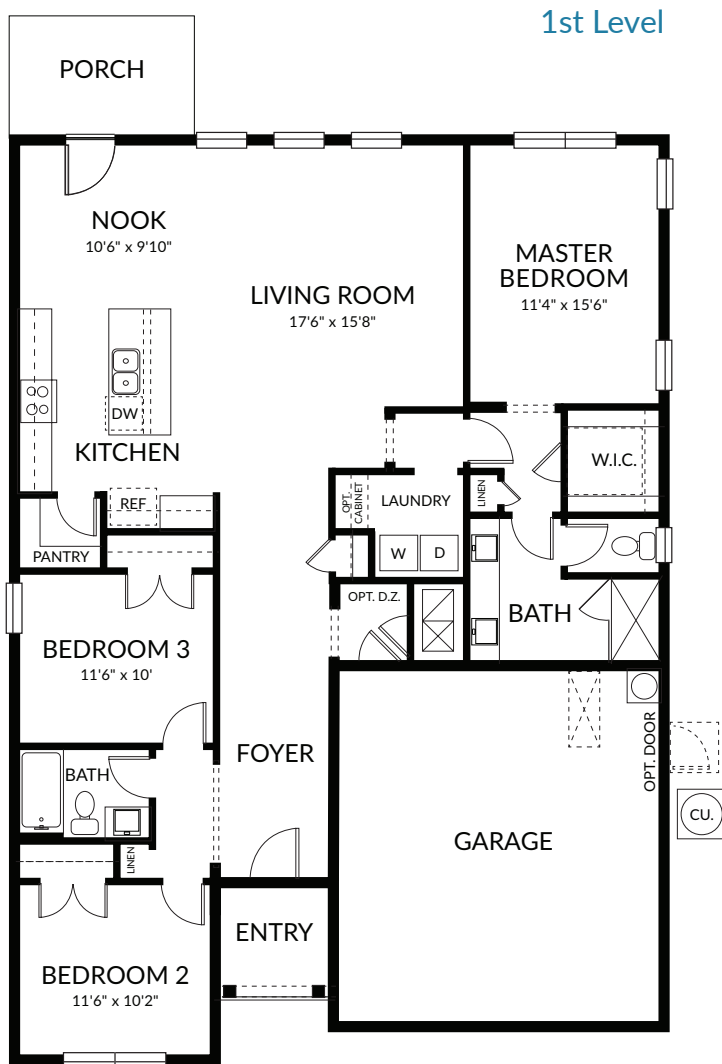
850-641-8802 - [Info@ThePreserveAtLakePowell.com](mailto:Info@ThePreserveAtLakePowell.com) - [www.ThePreserveAtLakePowell.com](http://www.ThePreserveAtLakePowell.com)

*Floor plan and rendering is an artist's conceptual rendering intended to provide a general overview. It does not constitute actual plans and specifications for any home and may depict elevations, upgrades, features and amenities that are not included as part of the home and/or may not be available for all lots. The floor plan rendering may not be drawn to scale. Any dimensions on the floor plan rendering are approximate and actual dimensions may vary. Plans and specifications are subject to change without notice. Homes may be constructed with floor plan that is the reverse of the floor plan rendering.*



# THE PRESERVE AT LAKE POWELL

## FLOOR PLANS FLOUNDER



- 3 bedrooms
- 2 bathrooms

- 1 porch
- 2-car garage

- 1,653 sq ft



850-641-8802 - [Info@ThePreserveAtLakePowell.com](mailto:Info@ThePreserveAtLakePowell.com) - [www.ThePreserveAtLakePowell.com](http://www.ThePreserveAtLakePowell.com)

Floor plan and rendering is an artist's conceptual rendering intended to provide a general overview. It does not constitute actual plans and specifications for any home and may depict elevations, upgrades, features and amenities that are not included as part of the home and/or may not be available for all lots. The floor plan rendering may not be drawn to scale. Any dimensions on the floor plan rendering are approximate and actual dimensions may vary. Plans and specifications are subject to change without notice. Homes may be constructed with floor plan that is the reverse of the floor plan rendering.